



2024

MAINSTAGE SPONSORSHIPS



# WHO WE ARE



**THE WEATHERVANE THEATRE OFFERS OPPORTUNITIES FOR RESIDENTS AND VISITORS TO EXPERIENCE A CULTURAL ENVIRONMENT THAT ENRICHES LIVES, EXPANDS MINDS, AND LIFTS SPIRITS. OUR SPONSOR BUSINESSES AND CORPORATIONS ENSURE THAT WE BRING LIVE THEATER TO THE NORTH COUNTRY EVERY YEAR. IN TURN SPONSORS RECEIVE INCREASED EXPOSURE, EMPLOYEE/CLIENT RECOGNITION, AND AN ENHANCED REPUTATION THAT COMES WITH COMMUNITY INVOLVEMENT. WE WORK TO DEVELOP A COMPREHENSIVE BENEFITS PACKAGE THAT MEETS BOTH THE SPONSOR'S VISIBILITY AND ENTERTAINMENT NEEDS.**

## **CONTACT US**

**CONTACT JORGE DONOSO, DIR. OF DEVELOPMENT, FOR MORE INFORMATION ON HOW YOU CAN BECOME A SPONSOR!**

**[JORGE@WEATHERVANENH.ORG](mailto:JORGE@WEATHERVANENH.ORG)**

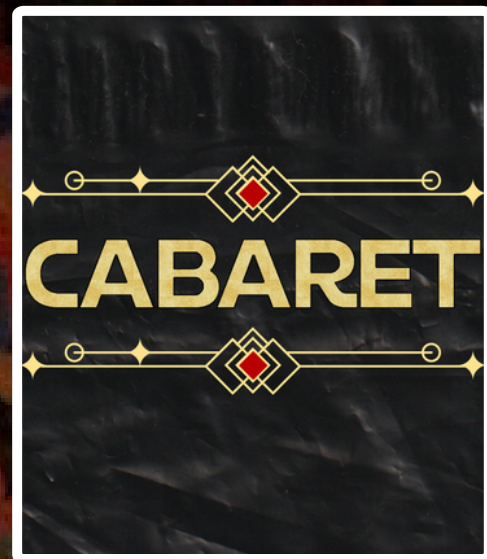
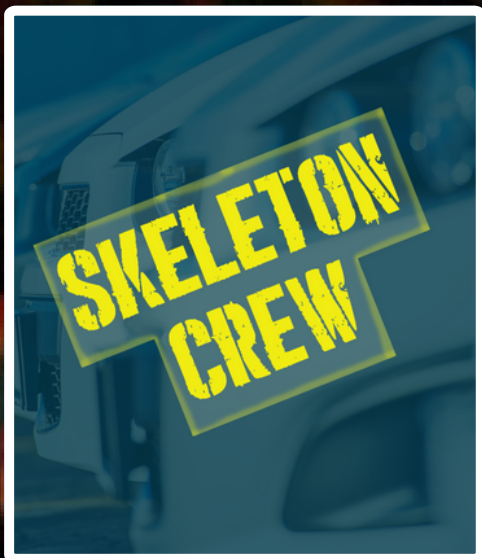
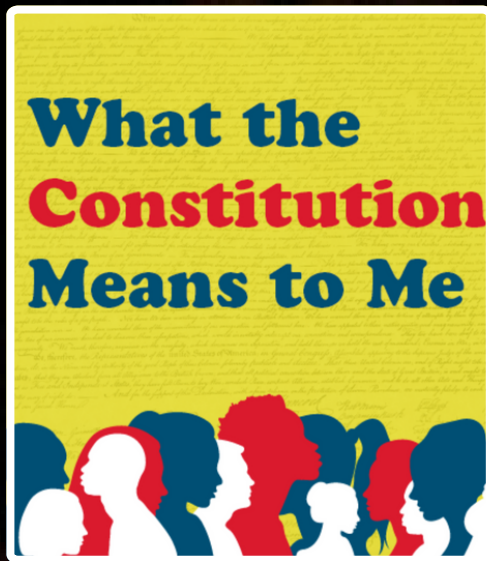
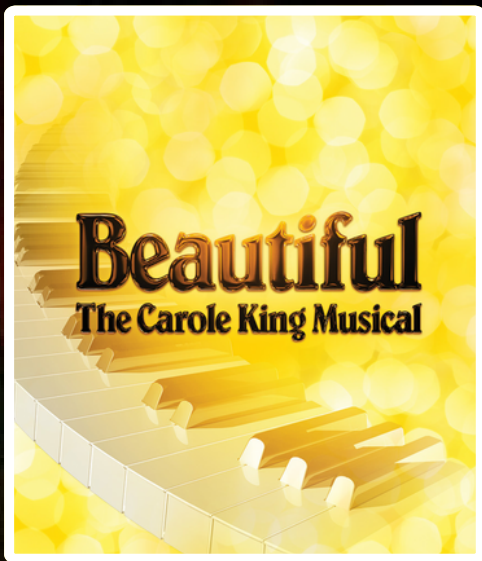
**OR**

**CONTACT THE BOX OFFICE**

**603-837-9322**



# THIS SEASON





**U.S. PREMIERE**

EVERYBODY'S TALKING ABOUT  
**JAMIE**

THE HIT WEST END MUSICAL ABOUT LEARNING WHO YOU ARE —AND LOVING IT!

**WORLD PREMIERE**



FROM THE MINDS OF  
TONY AND PULITZER PRIZE  
WINNER, ED KLEBAN (A  
CHORUS LINE), AND TWO  
TIME TONY AWARD  
WINNER, RICHARD MALTBY  
JR. (AIN'T MISBEHAVING,  
FOSSE, MISS SAIGON)  
COMES THIS  
HEARTWARMING NEW  
MUSICAL.





# OPPORTUNITIES

---



**SPONSORSHIPS RANGE FROM \$1,200 - \$15,000 AND PROVIDE EXCELLENT VISIBILITY FOR YOUR COMPANY. SPONSOR BENEFITS INCLUDE:**

- **ANNOUNCEMENT OF YOUR SPONSORSHIP FROM THE STAGE**
- **STRATEGIC PLACEMENTS OF YOUR LOGO OR BUSINESS NAME**
- **COMPLIMENTARY TICKETS TO SPONSORED PERFORMANCES**  
**PRESS RELEASE TO LOCAL, STATE, AND NATIONAL MEDIA**  
**OUTLETS DEDICATED TO YOUR SPONSORSHIP**

**+ MANY MORE PERKS AND BENEFITS FOR BUSINESSES AND INDIVIDUALS!**

**LET'S CUSTOMIZE!**

**\*\*\* A LA CARTE SPONSORSHIP & BENEFIT PACKAGES AVAILABLE UPON REQUEST \*\*\***



**NORTH COUNTRY NEW WORKS - \$1,200**

**SPONSOR OUR NEW WORKS FESTIVAL FEATURING MUSIC, PLAYS, POETRY, AND MUSICALS FROM THE WEATHERVANE STAFF!**

- SPONSOR MENTIONED IN ALL PRESS RELEASES, ADS, AND EMAIL BLASTS
- COMPLIMENTARY 1/8-PAGE AD IN SEASON 59 REP PLAYBILL
- NAME/LOGO PROMINENTLY FEATURED ON WEBSITE, PLAYBILL, AND SOCIAL MEDIA PLATFORMS
- (2) COMP TICKETS TO ALL SEASON SPECIAL EVENTS, ALL PATCHWORK PRODUCTIONS, AND A MAINSTAGE PRODUCTION
- EXCLUSIVE MEET & GREET, AND Q&A WITH COMPANY

**LEAD PARTNER - \$8,500**

**SPONSOR OUR SPECIAL EVENTS!**

- PRESS RELEASE TO ALL LOCAL, STATE, AND NATIONAL MEDIA, AND AN EMAIL BLAST ANNOUNCING YOUR SPONSORSHIP
  - TICKETS TO ALL SPECIAL EVENTS AND (10) COMPS TO ANY MAINSTAGE PRODUCTION
- + ALL BENEFITS OF A FIRST NIGHT SPONSOR**

**FIRST NIGHT SPONSOR  
\$2,500 - \$5,500**

**SPONSOR ONE OF OUR 10 MAINSTAGE PRODUCTIONS OF SEASON 59!**

- COMP TICKETS TO ALL SPECIAL EVENT AND SPONSORED PRODUCTION,
  - COMPLIMENTARY FULL-PAGE AD IN SEASON 59 REP PLAYBILL
- + ALL BENEFITS OF A NORTH COUNTRY NEW WORKS SPONSOR**

**FULL SEASON SPONSOR  
\$15,000**

**GENERAL SUPPORT FOR SEASON 59!**

- TICKETS TO ALL SPECIAL EVENTS AND (16) COMPS TO ANY MAINSTAGE PRODUCTION
  - EXCLUSIVE BACKSTAGE TOUR
- + ALL BENEFITS OF A LEAD PARTNER**



**\$2,500**

**PLAYS IN ALTERNATING REP JUNE 26 - JULY 6, 2024**

**What the  
Constitution  
Means to Me**



**HEIDI SCHRECK'S HILARIOUS, HOPEFUL, AND ACHINGLY HUMAN PLAY BREATHES NEW LIFE INTO OUR CONSTITUTION AND IMAGINES HOW IT WILL SHAPE THE NEXT GENERATION OF AMERICANS. PULITZER PRIZE FINALIST AND TONY AWARD NOMINEE.**

**PLAYS IN ALTERNATING REP JULY 3 - JULY 18, 2024**

**SKELETON  
CREW**

**A MAKESHIFT FAMILY OF WORKERS AT THE LAST EXPORTING AUTO PLANT IN THE CITY NAVIGATE THE POSSIBILITY OF FORECLOSURE. AS POWER DYNAMICS SHIFT THEY ARE PUSHED TO THE LIMITS OF SURVIVAL. 2022 BEST PLAY TONY NOMINEE.**



**\$3,000**

**PLAYS IN ALTERNATING REP SEPTEMBER 18 - SEPTEMBER 27, 2024**



**SHAKESPEARE'S CLASSIC LOVE STORY COMES TO THE WEATHERVANE STAGE IN AN EXCITING NEW PRODUCTION! THE POWER OF LOVE AND THE PERIL OF HATE WRITE THE DESTINY OF THESE STAR-CROSSED LOVERS IN THIS TIMELESS TALE DIRECTED BY NATHANIEL P. CLARIDAD.**

**\$4,000**

**PLAYS IN ALTERNATING REP AUGUST 27 - SEPTEMBER 28, 2024**

**Clue**

**WHO DID IT, WHERE, AND WITH WHAT?!**

**BASED ON THE ICONIC 1985 MOVIE INSPIRED BY THE CLASSIC BOARD GAME, CLUE IS A HILARIOUS FARCE-MEETS-MURDER MYSTERY.**



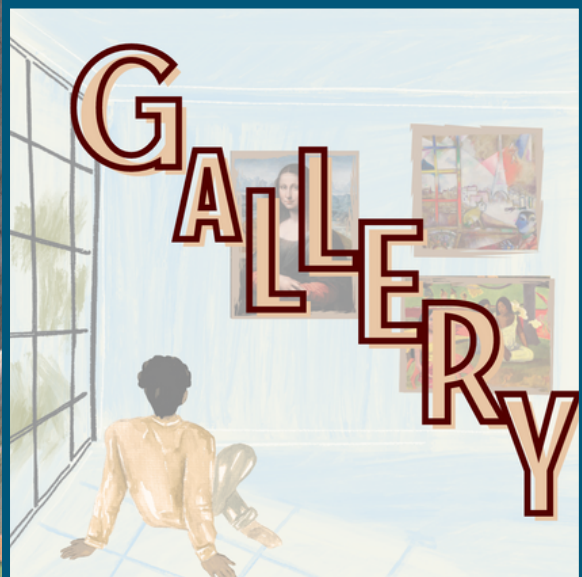
**\$5,000**

**PLAYS IN ALTERNATING REP JUNE 30 - AUGUST 18, 2024**



**THE YEAR IS 1985. THE PLACE IS NEW JERSEY. A WANNABE ROCK STAR (AKA A PROFESSIONAL WEDDING SINGER) IS LEFT AT THE ALTAR AND FINALLY CHANGES HIS TUNE. BASED ON THE HIT ADAM SANDLER MOVIE.**

**PLAYS IN ALTERNATING REP JULY 20 - AUGUST 6, 2024**



**A WORLD PREMIERE MUSICAL FOUR DECADES IN THE MAKING. FEATURING THE MUSIC OF TONY AWARD AND PULITZER PRIZE WINNER ED KLEBAN (A CHORUS LINE), THIS FUNNY, TUNEFUL, AND POIGNANT MUSICAL IS CONCEIVED AND DIRECTED BY TWO-TIME TONY AWARD WINNER RICHARD MALTBY, JR.**



**\$5,000**

**PLAYS IN ALTERNATING REP JULY 31 - AUGUST 29, 2024**

EVERYBODY'S TALKING ABOUT  
**JAMIE**

**THE HIT WEST END MUSICAL ABOUT  
LEARNING WHO YOU ARE –AND LOVING  
IT!**

**16-YEAR-OLD JAMIE OVERCOMES  
OBSTACLES AND COURAGEOUSLY  
FOLLOWS HIS UNCONVENTIONAL DREAM  
IN THIS INSPIRING TRUE STORY TURNED  
MUSICAL MARVEL. GLOBAL REGIONAL  
PREMIERE!**

**PLAYS IN ALTERNATING REP AUGUST 14 - SEPTEMBER 29, 2024**

, 20

**THE FULL  
MONTY**

**A RAUCOUS, POP-ROCK-MUSICAL  
ADAPTATION OF THE HIT MOVIE TURNED  
BROADWAY SMASH... THAT TAKES IT  
ALL OFF.**



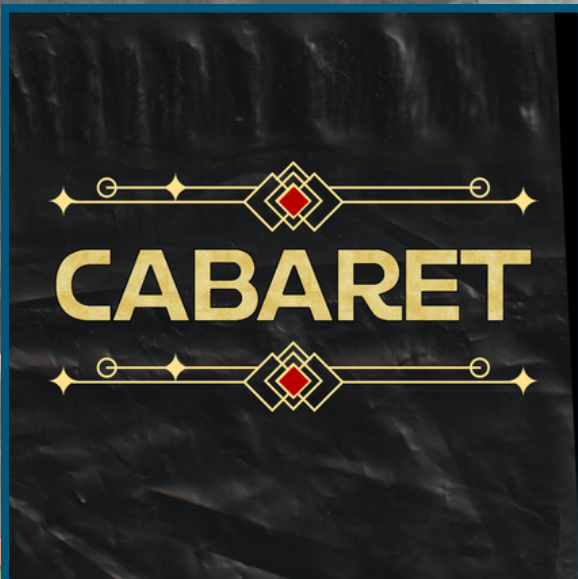
**\$5,500**

**JUNE 13 - 22, 2024 | NO PERFORMANCES ON JUNE 15 AND 21**



**THE INSPIRING TRUE STORY OF CAROLE KING'S REMARKABLE JOURNEY FROM SCHOOLGIRL TO SUPERSTAR. FEATURING TWO DOZEN HITS SUCH AS "NATURAL WOMAN" AND "ONE FINE DAY," THIS TONY-WINNING CELEBRATION IS FILLED WITH THE SONGS YOU REMEMBER – AND A STORY YOU'LL NEVER FORGET!**

**OCTOBER 6 - OCTOBER 13, 2024 | NO PERFORMANCE OCTOBER 8**



**STEP INSIDE THE SEEDY KIT KAT CLUB IN 1930S BERLIN. THE CLASSIC KANDER/EBB/MASTEROFF MUSICAL AT THE HISTORIC WEATHERVANE AS YOU'VE NEVER SEEN EITHER BEFORE.**

**FOR MORE INFORMATION OR A LA CARTE PACKAGES, EMAIL [JORGE@WEATHERVANENH.ORG](mailto:jorge@weathervanenh.org).**





**SEE YOU AT THE SHOW!**